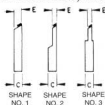
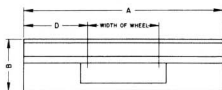


# CENTERLESS GRINDER BLADES

for Thrufeed Work Rests

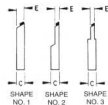
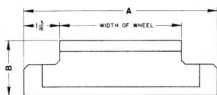
NO. 0 CENTERLESS, MODEL LO AND NO. 107-4 CENTERLESS, MODEL LM



WORKREST WHEEL WIDTH AND TYPE	MAX. WORK LENGTH	WORK DIAMETER RANGE	CARBIDE TIPPED	HIGH SPEED STEEL	SHAPE NO.	DIMENSIONS				
						A	B	C	D	E
4" THRUFEED	7"	.030-.060	261812	258690	3	13.125	2.125	.50	4.25	.025
		.060-.125	261813	258691	3	13.125	2.125	.50	4.25	.055
		.125-.250	261814	258692	3	13.125	2.125	.50	4.25	.105
		.250-.500	.....	261819	3	13.125	2.125	.50	4.25	.234
		.250-.500	261815	.....	3	13.125	2.125	.50	4.25	.187
		.500-1.00	261816	261820	2	13.125	2.000	.50	4.25	.468
	10"	1.00-1.50	275495	275496	1	13.125	1.500	.50	6.25	.500
		.125-.250	275479	275504	3	17.125	2.125	.50	6.25	.105
		.250-.500	275503	275505	3	17.125	2.125	.50	6.25	.234
		.250-.500	275481	.....	3	17.125	2.125	.50	6.25	.187
		.500-1.00	275482	275506	2	17.125	2.125	.50	6.25	.468
		1.00-1.50	275483	275507	1	17.125	1.500	.50	6.25	.500

## for Infeed Work Rests

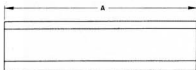
NO. 0 CENTERLESS, MODEL LO AND NO. 107-4 CENTERLESS, MODEL LM



WORKREST WHEEL WIDTH AND TYPE	MAX. WORK LENGTH	WORK DIAMETER RANGE	CARBIDE TIPPED	HIGH SPEED STEEL	SHAPE NO.	DIMENSIONS				
						A	B	C	E	
4" INFEED	4"	.030-.060	261807	258694	3	6.375	2.187	.50	.025	
		.060-.125	261808	258695	3	6.375	2.187	.50	.055	
		.125-.250	261809	258696	3	6.375	2.187	.50	.105	
		.250-.500	.....	261817	3	6.375	2.187	.50	.234	
		.250-.500	261810	.....	3	6.375	2.187	.50	.187	
		.500-1.00	261811	261818	2	6.375	2.250	.50	.468	
		1.00-1.50	275498	275493	1	6.375	1.750	.50	.500	

## GUIDES - THRUFEED WORKRESTS

NO. 0 CENTERLESS, MODEL LO AND NO. 107-4 CENTERLESS, MODEL LM



WORKREST WHEEL WIDTH AND TYPE	MAX. WORK LENGTH	WORK DIAMETER RANGE	HIGH SPEED STEEL PART NO.	SHAPE NO.	NO. REQ'D	DIMENSIONS		
						A	B	C
4" THRUFEED	7"	.060-1.50	HS-258533	G-1	4	4.500	.937	.375
	10"	.060-1.50	HS-277101	G-1	4	6.500	.937	.375