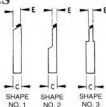
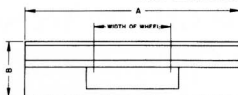
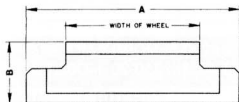


MONZA CENTERLESS GRINDER BLADES

for Thrufeed Work Rests



MODEL	WORK DIAMETER RANGE	CARBIDE TIPPED PART NO.	SHAPE NO.	DIMENSIONS			
				A	B	C	E
MODEL 300	.110-.180	327-15A	3	11.81	2.60	.38	.100
	.160-.240	327-15B	2	11.81	2.60	.38	.140
	.240-.320	327-16A	2	11.81	2.60	.38	.200
	.320-.480	327-16B	2	11.81	2.60	.38	.280
	.400-2.00	327-14	1	11.81	2.40	.38	.380
MODEL 400	.110-.180	475-13A	3	15.75	4.25	.61	.100
	.180-.280	475-13B	3	15.75	4.25	.61	.160
	.280-.440	475-12	2	15.75	4.25	.61	.240
	.440-.800	475-11A	2	15.75	3.98	.61	.390
	.700-2.00	475-11B	1	15.75	3.98	.61	.610
	2.00-4.00	475-11C	1	15.75	3.58	.61	.610
	4.00-6.00	475-11D	1	15.75	3.19	.61	.610
MODEL 500	.110-.180	575-13A	3	17.75	4.25	.61	.100
	.180-.280	575-13B	3	17.75	4.25	.61	.160
	.280-.440	575-12	2	17.75	4.25	.61	.240
	.440-.800	575-11A	2	17.75	3.98	.61	.390
	.700-2.00	575-11B	1	17.75	3.98	.61	.610
	2.00-4.00	575-11C	1	17.75	3.58	.61	.610
	4.00-6.00	575-11D	1	17.75	3.19	.61	.610



for Infeed Work Rests

MODEL	WORK DIAMETER RANGE	CARBIDE TIPPED PART NO.	SHAPE NO.	DIMENSIONS			
				A	B	C	E
MODEL 300	.110-.180	311-10A	3	6.22	2.76	.38	.100
	.160-.240	311-10B	3	6.22	2.76	.38	.140
	.240-.320	311-7A	2	6.22	2.76	.38	.200
	.320-.480	311-7B	2	6.22	2.76	.38	.280
	.400-2.00	311-6	1	6.22	2.36	.38	.380
MODEL 400	.110-.180	453-3A	3	10.87	4.25	.61	.100
	.180-.280	453-3B	3	10.87	4.25	.61	.160
	.280-.440	475-2	2	10.87	4.25	.61	.240
	.440-.800	475-1A	2	10.87	3.96	.61	.390
	.700-2.00	475-1B	1	10.87	3.96	.61	.610
	2.00-4.00	475-1C	1	10.87	3.58	.61	.610
	4.00-6.00	475-1D	1	10.87	3.19	.61	.610
MODEL 500	.110-.180	553-3A	3	12.87	4.25	.61	.100
	.180-.280	553-3B	3	12.87	4.25	.61	.160
	.280-.440	575-2	2	12.87	4.25	.61	.240
	.440-.800	575-1A	2	12.87	3.96	.61	.390
	.700-2.00	575-1B	1	12.87	3.96	.61	.610
	2.00-4.00	575-1C	1	12.87	3.58	.61	.610
	4.00-6.00	575-1D	1	12.87	3.19	.61	.610