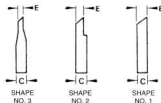
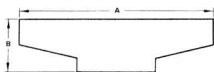


CENTERLESS GRINDER BLADES

for Thrufeed Work Rests – Long

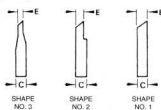
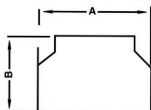
NO. 220-8 CENTERLESS, MODELS AE & RK; NO. 230-12 TWIN GRIP CENTERLESS, MODELS AE & RK;
NO. 350-20 TWIN GRIP CENTERLESS, MODELS AE & RK



| WORK REST WHEEL WIDTH AND TYPE | MAX. WORK LENGTH | WORK DIAMETER RANGE | CARBIDE TIPPED PART NO. | SHAPE NO. | DIMENSIONS | | | |
|--------------------------------------|------------------------|---------------------------|----------------------------|--------------|------------|------|-----|------|
| | | | | | A | B | C | E |
| 8" THRUFEED | 13" | 062-.100 | 3422678 | 3 | 24.38 | 7.18 | .79 | .050 |
| | | 098-.197 | 3422685 | 3 | 24.38 | 7.18 | .79 | .080 |
| | | 197-.394 | 3422693 | 3 | 24.38 | 7.18 | .79 | .160 |
| | | 394-.787 | 3422701 | 3 | 24.38 | 7.00 | .79 | .310 |
| | | 787-1.575 | 3422709 | 2 | 24.38 | 6.71 | .79 | .630 |
| | | 1.575-2.756 | 3422717 | 1 | 24.38 | 6.25 | .79 | .790 |
| 10" THRUFEED | 13" | 2.756-4.331 | 3422724 | 1 | 24.38 | 5.44 | .79 | .790 |
| | | 062-.100 | 3422679 | 3 | 26.38 | 7.18 | .79 | .050 |
| | | 098-.197 | 3422686 | 3 | 26.38 | 7.18 | .79 | .080 |
| | | 197-.394 | 3422694 | 3 | 26.38 | 7.18 | .79 | .160 |
| | | 394-.787 | 3422702 | 3 | 26.38 | 7.00 | .79 | .310 |
| | | 787-1.575 | 3422710 | 2 | 26.38 | 6.71 | .79 | .630 |
| 12" THRUFEED | 13" | 1.575-2.756 | 3422718 | 1 | 26.38 | 6.25 | .79 | .790 |
| | | 2.756-4.331 | 3422725 | 1 | 26.38 | 5.44 | .79 | .790 |
| | | 062-.100 | 3422680 | 3 | 28.38 | 7.18 | .79 | .050 |
| | | 098-.197 | 3422687 | 3 | 28.38 | 7.18 | .79 | .080 |
| | | 197-.394 | 3422695 | 3 | 28.38 | 7.18 | .79 | .160 |
| | | 394-.787 | 3422703 | 3 | 28.38 | 7.00 | .79 | .310 |
| 20" THRUFEED | 13" | 787-1.575 | 3422711 | 2 | 28.38 | 6.71 | .79 | .630 |
| | | 1.575-2.756 | 3422719 | 1 | 28.38 | 6.25 | .79 | .790 |
| | | 2.756-4.331 | 3422726 | 1 | 28.38 | 5.44 | .79 | .790 |
| | | 4.331-6.000 | 3422730 | 1 | 28.38 | 4.75 | .79 | .790 |
| | | 394-.787 | 3422737 | 3 | 36.38 | 6.10 | .79 | .310 |
| | | 787-1.575 | 3422738 | 2 | 36.38 | 6.10 | .79 | .630 |
| 8" INFEEED | 8" | 1.575-2.756 | 3422739 | 1 | 36.38 | 5.71 | .79 | .790 |
| | | 2.756-4.331 | 3422740 | 1 | 36.38 | 5.31 | .79 | .790 |
| | | 4.331-6.000 | 3422741 | 1 | 36.38 | 4.72 | .79 | .790 |

for Infeed Work Rests

NO. 220-8 CENTERLESS, MODELS AE, RK, VIKING



| WORK REST WHEEL WIDTH AND TYPE | MAX. WORK LENGTH | WORK DIAMETER RANGE | CARBIDE TIPPED PART NO. | SHAPE NO. | DIMENSIONS | | | |
|--------------------------------------|------------------------|---------------------------|----------------------------|--------------|------------|------|-----|------|
| | | | | | A | B | C | E |
| 8" INFEEED | 8" | 098-.197 | 3454580 | 3 | 11.00 | 7.18 | .79 | .080 |
| | | 197-.394 | 3454581 | 3 | 11.00 | 7.18 | .79 | .160 |
| | | 394-.787 | 3452969 | 3 | 11.00 | 7.00 | .79 | .310 |
| | | 787-1.575 | 3454582 | 2 | 11.00 | 6.71 | .79 | .630 |
| | | 1.575-2.756 | 3454583 | 1 | 11.00 | 6.25 | .79 | .790 |
| | | 2.756-4.331 | 3454584 | 1 | 11.00 | 5.44 | .79 | .790 |