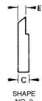
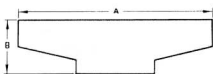


CENTERLESS GRINDER BLADES

for Thrufeed Work Rests – Short Guides

NO. 220-8 CENTERLESS, MODELS AE & RK; NO. 230-12 TWIN GRIP CENTERLESS, MODEL AE
NO. 350-20 TWIN GRIP CENTERLESS, MODELS AE & RK

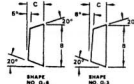
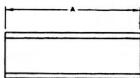
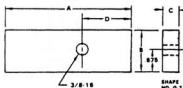


WORKREST WHEEL WIDTH AND TYPE	MAX. WORK LENGTH	WORK DIAMETER RANGE	CARBIDE TIPPED PART NO.	SHAPE NO.	DIMENSIONS			
					A	B	C	E
8" THRUFEED	9.50"	.062-.100	3422675	3	20.44	7.18	.79	.050
		.098-.197	3422681	3	20.44	7.18	.79	.080
		.197-.394	3422689	3	20.44	6.64	.79	.160
		.394-.787	3422697	3	20.44	6.57	.79	.310
		.787-1.575	3422705	2	20.44	6.66	.79	.630
		1.575-2.756	3422713	1	20.44	5.90	.79	.790
		2.756-4.331	3422721	1	20.44	5.44	.79	.790
10" THRUFEED	9.50"	.062-.100	3422676	3	22.44	7.18	.79	.050
		.098-.197	3422682	3	22.44	7.18	.79	.080
		.197-.394	3422690	3	22.44	6.64	.79	.160
		.394-.787	3422698	3	22.44	6.57	.79	.310
		.787-1.575	3422706	2	22.44	6.66	.79	.630
		1.575-2.756	3422714	1	22.44	5.90	.79	.790
		2.756-4.331	3422722	1	22.44	5.44	.79	.790
12" THRUFEED	9.50"	.062-.100	3422677	3	24.44	7.18	.79	.050
		.098-.197	3422683	3	24.44	7.18	.79	.080
		.197-.394	3422691	3	24.44	6.64	.79	.160
		.394-.787	3422699	3	24.44	6.57	.79	.310
		.787-1.575	3422707	2	24.44	6.66	.79	.630
		1.575-2.756	3422715	1	24.44	5.90	.79	.790
		2.756-4.331	3422723	1	24.44	5.44	.79	.790
20" THRUFEED	9.50"	4.331-6.000	3422728	1	24.44	4.75	.79	.790
		.394-.787	3422732	3	32.44	5.85	.79	.310
		.787-1.575	3422733	2	32.44	5.94	.79	.630
		1.575-2.756	3422734	1	32.44	5.59	.79	.790
		2.756-4.331	3422735	1	32.44	4.92	.79	.790
		4.331-6.000	3422736	1	32.44	4.72	.79	.790

CENTERLESS GRINDER GUIDES

for Thrufeed Work Rests

NO. 220-8 CENTERLESS, MODELS AE, RK, VIKING; NO. 230-12 TWIN GRIP CENTERLESS, MODELS
AE & RK; NO. 350-20 TWIN GRIP CENTERLESS, MODELS AE & RK



WORKREST WHEEL WIDTH AND TYPE	MAX. WORK LENGTH	WORK DIAMETER RANGE	PART NO.	SHAPE NO.	NO. REQ'D	DIMENSIONS			
						A	B	C	D
8" 10" 12" 20" THRUFEED	9.50"	.062-6.000	3422333	G-7	2	6.16	1.75	.500	2.10
	13.00"	.062-6.000	3422335	G-7	2	8.13	1.75	.500	4.07
	9.50"	.062-1.575	3424078	G-8	2	6.16	2.00	.541
	13.00"	.062-1.575	3424079	G-8	2	8.13	2.00	.541
	9.50"	.394-6.000	3422334	G-3	2	6.16	2.00	.625
	13.00"	.394-6.000	3422336	G-3	2	8.13	2.00	.625